

Wicker – Technical Data Sheet

Collection

Wicker

Reference

W44842907

Description

Sand coloured material with a reed structure and a black diamond pattern

Composition

65% PA 21% CO 12% PES 2% PM

Dimensions

Rolls of 139,5 cm wide – per linear meter

Repeat

Height: 69,5 cm - Width: 46,5 cm

Match

Straight match

Glue

DWC Colforte or glue for wall textile

Colorfastness to light

4-5

MOQ

100 cm

Walltextile instructions

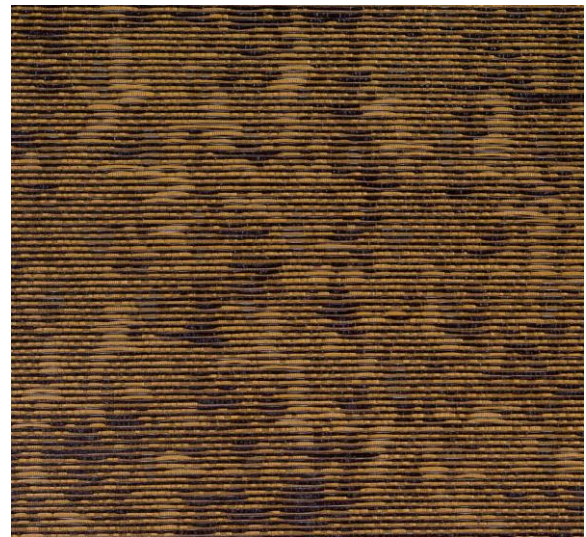
Butting seams

How to paste

Paste the wall

How to remove

Peel fabric, remove backing with moisture



Overview full pattern



Available as fabric

No

Washability

Light-washable

Fire retardancy

FR-certificate on request at additional cost

HS-code walltextile / fabric

590500900 / -

